

MOTHER



1 inch square

5cm square

A1

MOTHER



Plain stocking piece

Cut 1 from fabric

Cut 2 mirrored from
lining fabric

A1

A2

Join to pattern piece 2 here

Cut 1 from outer fabric
Pattern piece

1

MOTHER



A1

MOTHER



B1

A1

A2

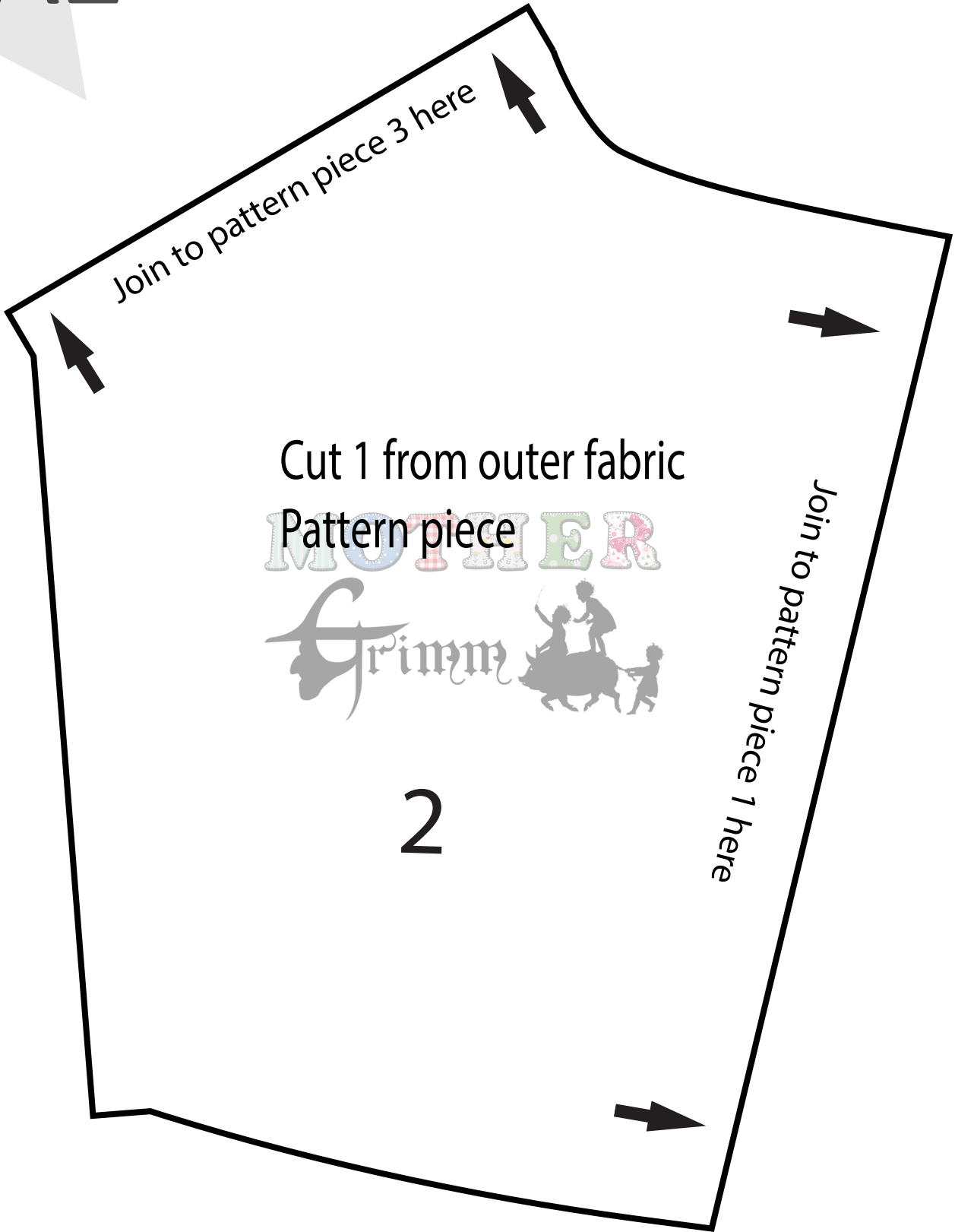
MOTHER



B1

B2

A2



B2

B1

MOTHER



Join to pattern piece 4 here



5

C1

B1

B2

Join to pattern piece 2 here

3

MOTHER



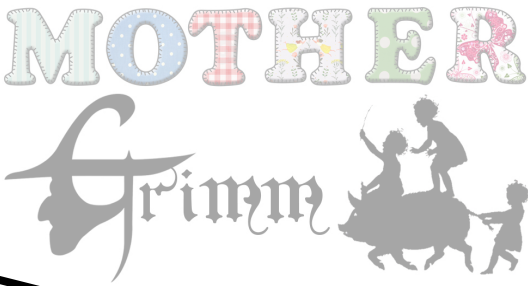
Cut 1 from outer fabric
Pattern piece

C1

C2

B2

Cut 1 from outer fabric
Pattern piece



C2

C1

Cut 1 from outer fabric
Pattern piece

MOTHER4



Join to pattern pieces here

D1

C1

C2

MOTHER



6

D1

C2

MOTHER



Cut 1 from outer fabric
Pattern piece



Foldline

Hanging strap

Cut 1 on foldline

MOTHER

